



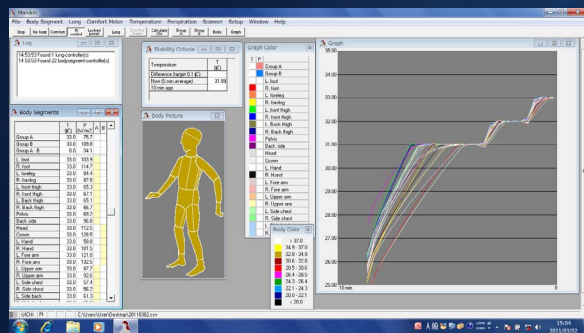
**KANOMAX**  
The Ultimate Measurements

**PT TEKNIKI CLIMATE COMFORT**

## THERMAL MANIKIN SYSTEM

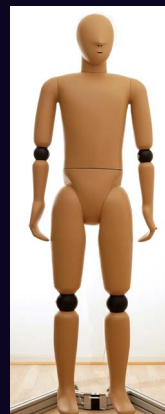
State-of-the-art manikin system used for accurate and repeatable assessment of the thermal comfort of a human in all realistic environments

- ❖ Natural bodyshape – male or female – with a dense 2,2 mm wiring optimized to create a uniform heat loss across the thermal manikin's body.
- ❖ Reaches set point temperature in less than 10 minutes and maintains stability in any realistic operative environment
- ❖ Can be placed standing, sitting or laying down depending on the application. Option to include mode for walking/ motion.
- ❖ Cast in high quality glass fiber with robust polyoxymethylen joints, allowing the thermal manikin to withstand being moved around, dressed/undressed etc.
- ❖ Operated through an intuitive PC SW interface and free on-site training/instruction in the first week.



## FEATURES AND BENEFITS

- ❖ **Parameters:** Skin T, Heat flux, PMV, PPD, SET, ET, Teq, Clo
- ❖ **Body zones:** 22 – 27 (or more on request)
- ❖ **Modes:** Comfort mode, Operative T, PID fixed setpoint and fixed heat loss
- ❖ **Body size:** Male 175 cm, Female 168 cm, 20 kg
- ❖ **Power supply:** 100 / 240 V in, 24 V DC out
- ❖ **Heat loss:** Range 0 – 300 W/m<sup>2</sup>, resolution 0,1 W/m<sup>2</sup>, precision 1%
- ❖ **Temperature:** Range 15 – 45 C, resolution 0,1 C, precision 0,1 C
- ❖ Body can be separated in the waist for easy transport



**KANOMAX USA, INC.**  
219 US HWY 206  
ANDOVER, NJ 07821 USA  
TEL: 973-786-6386  
FAX: 973-786-7586  
E-MAIL: SALES@KANOMAX-USA.COM  
URL: WWW.KANOMAX-USA.COM

**DISTRIBUTED BY:**

