

## Applicable models:

Handheld Odor Meter OMX-SRM or OMX-SR

## Software requirements:

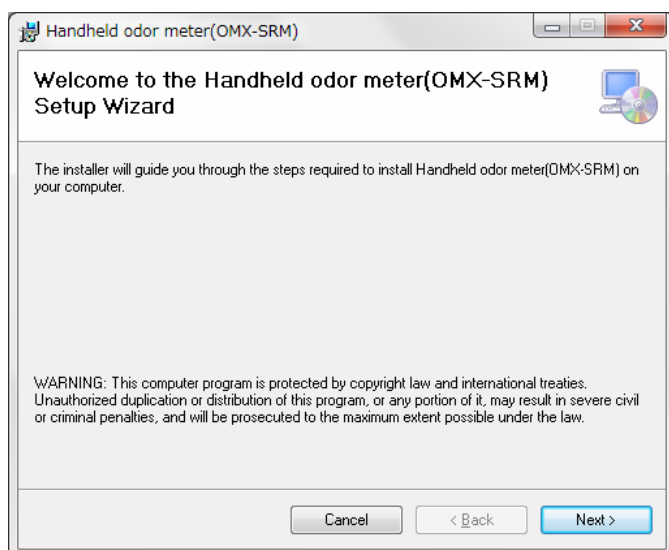
Operating System: Windows XP, Vista(32/ 64 bit), 7 (32 / 64 bit), or 8 (32 / 64bit)

USB driver: Silicon Laboratories CP210x Drivers

Microsoft .Net Framework 4

## How to Install Software

Store the “msi” file corresponding to your model and language in an appropriate folder and execute it. “Set up” program is activated. Follow the displayed instructions.



Note:

“.Net Framework 4” may be required to install for Windows XP, Vista or Windows 7 in advance. In such case, download it from Microsoft website.

Note:

USB driver software may be required to install in order to connect Handheld Odor Meter of OMX-SRM with USB Connection Cable.

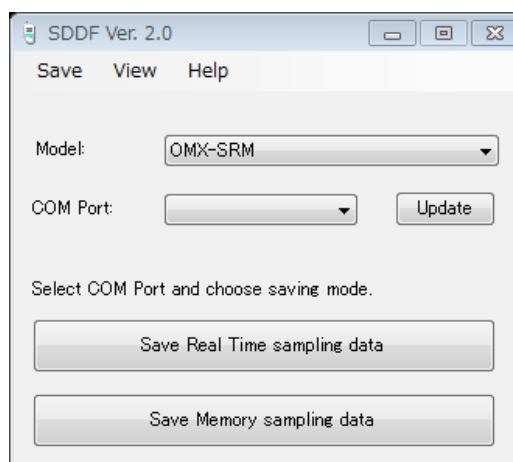
The latest driver software can be downloaded from Silicon Laboratories website.

## How to Activate Software

1. Double-click the shortcut icon of “Handheld Odor Meter” on desktop.
2. Main Screen will appear.



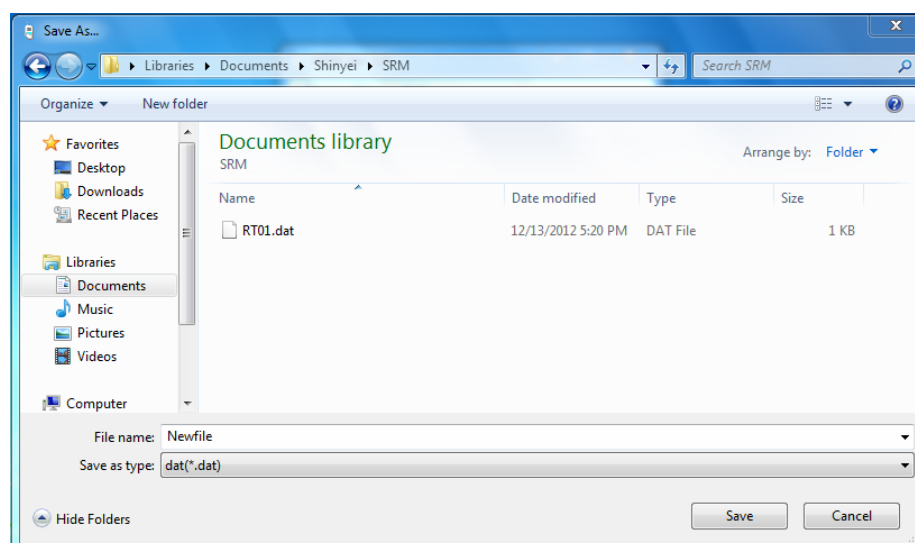
Opening Screen



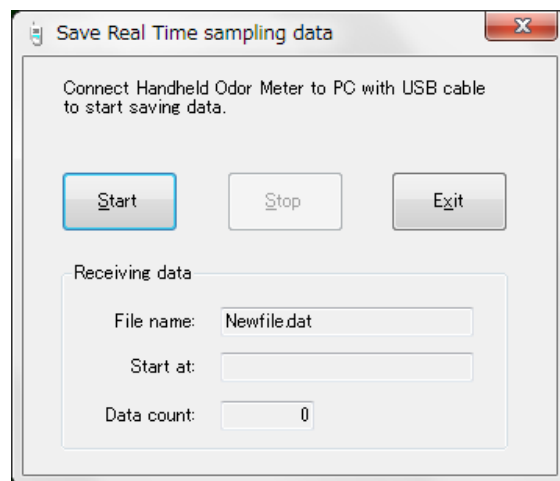
Main Screen

## Real-time Sampling

1. Select your model from “Model” drop-down list in “Main Screen” if the model is OMX-SR or OMX-SRM.
2. Select COM port from “COM-Port” drop-down list to connect Handheld Odor Meter to PC. The appropriate port is not shown in the drop-down list unless PC is connected to the Meter with USB Connection Cable in advance. Click “Update” to show the port if PC is connected to the Meter after activating the software.
3. Click “Save Real Time sampling data” or select “Save”-“Save Real Time sampling data.”
4. “Save As...” window appears. Enter a new file name or select the file name, and click “Save.” If selected, the file is overwritten.



5. "Save Real Time sampling data" window appears.  
When the Meter is ready, click "Start" to start receiving data from the device.



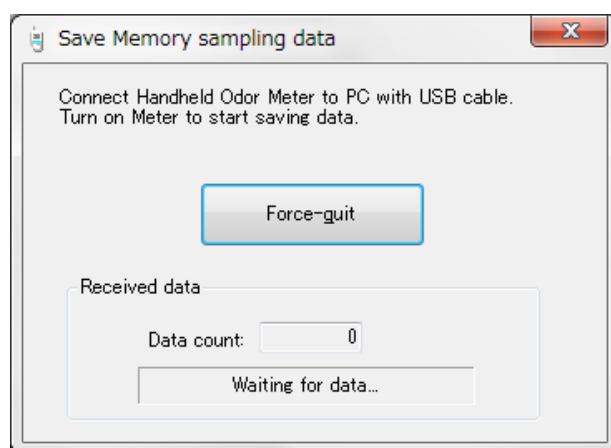
6. Click "Stop" to suspend data saving until "Start" is clicked again.
7. Click "Exit" to end data saving and return to "Main Screen."  
At the same time, "View graph of measured data?" appears.  
Click "Yes" to view the measured data.
8. While viewing the data, further data saving can be executed.

## Memory Sampling

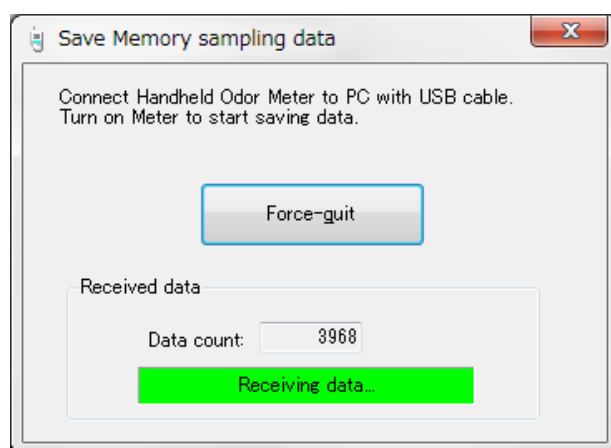
1. Select your model from “Model” drop-down list in “Main Screen” if the model is OMX-SR or OMX-SRM.
2. Select COM port from “COM port” to connect Handheld Odor Meter to PC.  
The appropriate port is not shown in the drop-down list unless PC is connected to the Meter with USB cable in advance.  
Click “Update” to show the port if PC is connected to the Meter after activating the software.

\*Do not turn on the device at this time)

3. Click “Save Memory Time sampling data” or select “Save”-“Save Memory Time sampling data.”
4. “Save As...” window appears.  
Enter a new file name or select the file name, and click “Save.”  
If selected, the file is overwritten.
5. Turn on the device after “Save Memory sampling data” windows appears.



Memory data saving starts while counting up the data.



6. When the data receiving is completed, the data is saved as entered name with data number.  
If the same file name already exists, extension number will be added.

For example:

Entered name    ?    MSDATA.dat

Saved file name    ?    MSDATA001.dat

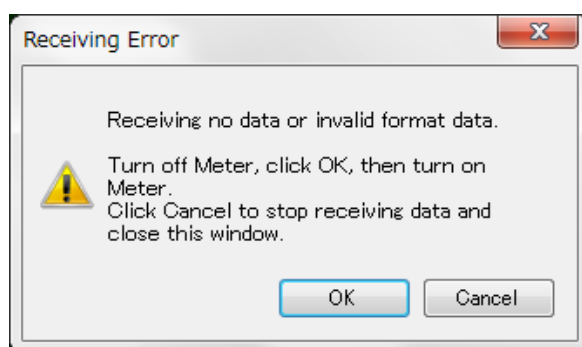
MSDATA002.dat    · · · If the same name already exists:

MSDATA002\_1.dat

7. After saving data, “Main Screen” appears and the saved data can be viewed in the same way of “Real Time Sampling.”

#### \*Receiving Error

The following error window will appear when the device is turned on before connecting PC to the Meter or invalid format data are received.

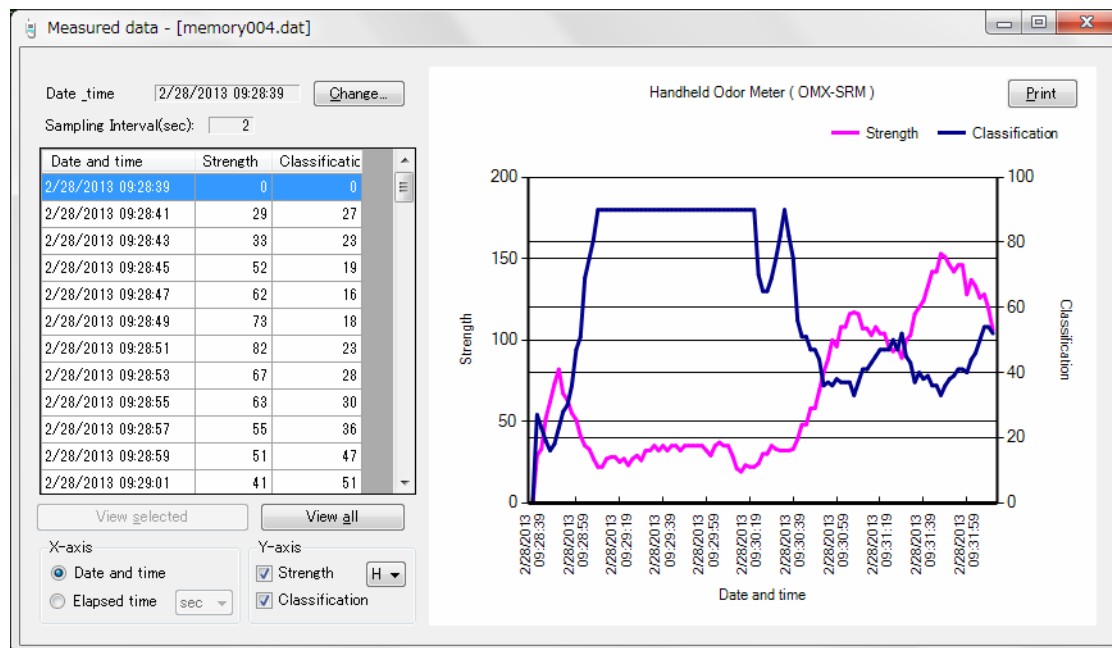


## Viewing saved data

Click “View” – “Draw graph...” in Main Screen to open “Select data file” window.  
Select the file name to view the data.  
Multiple data can be displayed.

Note: The above viewing cannot be executed while saving Real Time or Memory sampling data.

### Data Viewing Example for OMX-SRM



## X-axis (time)

Time can be selected as “Elapsed time” or “Date and time” with “X-axis” frame at the bottom left. Elapsed time unit can be chosen as “minute” or “second.”

## Y-axis

Two indications of “Strength” and “Classification” are originally displayed. Uncheck either indication if it is not necessary.

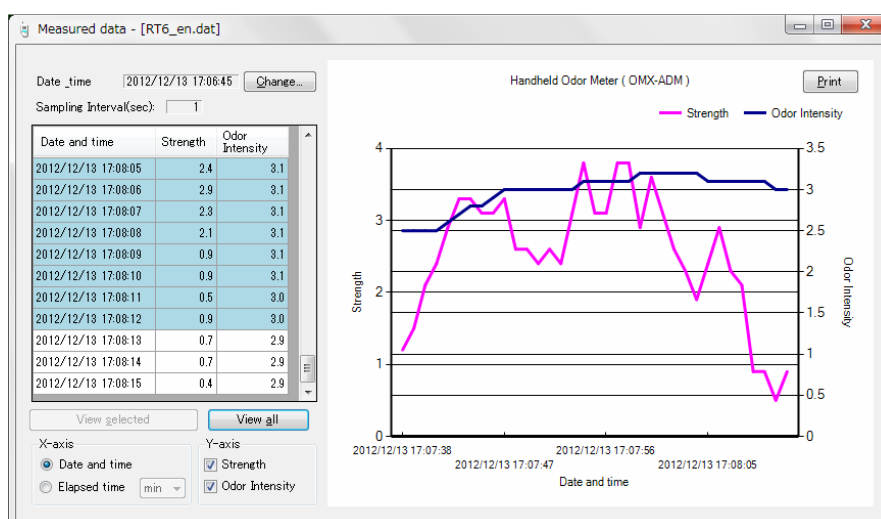
Select “High” or “Low” range for “Strength.”

## Data Selection

Two or more data can be displayed by selecting data in the list. Click “View all” to see all the data.

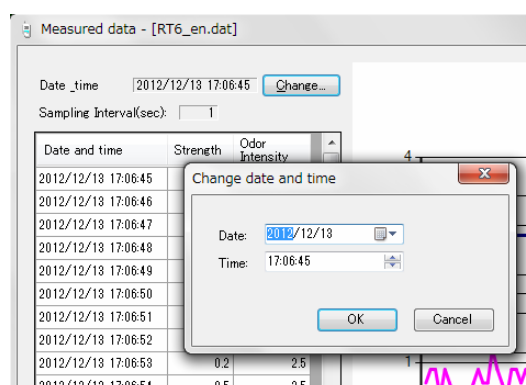
## Specifying Data

Clicking anywhere in the graph shows a grey vertical line, which indicates a specific data. Background color of the data in the list will be changed to grey.



## Changing Date Time

Click “Change” to change the measurement time. The change is available only on the screen, not for saved data.

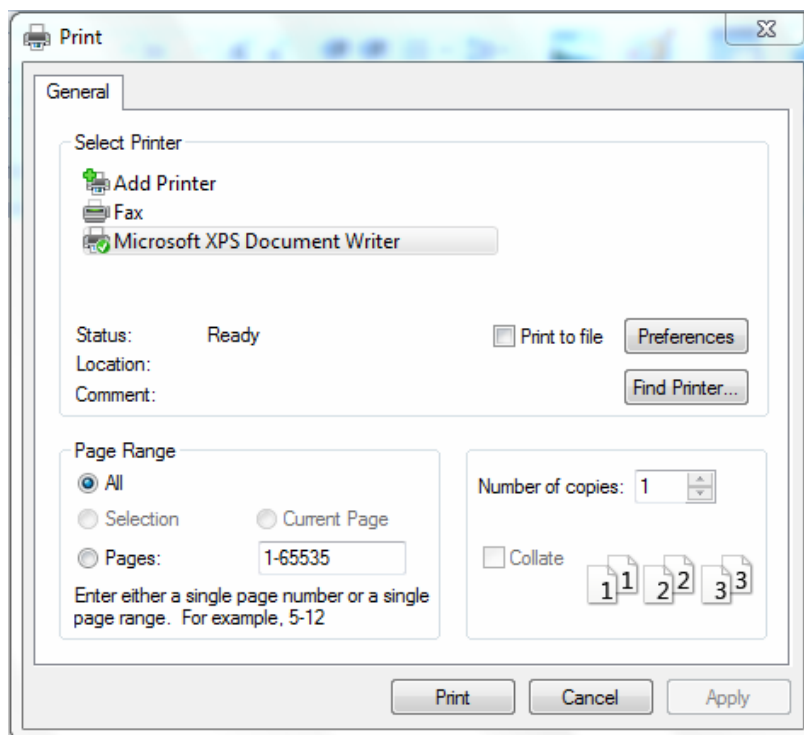


## Printing graph

Graph area can be printed.

Click “Print” to show “Print” dialogue box as below.

After appropriate setting, click “Print” to print the graph area.



## Searching COM Port

Click “Help” – “Confirm COM port” to open Window’s Device Manager. This is useful for confirming port Number.

## Ending Software

Click “Save” – “Exit” in Main Screen or “X” at the top right to end the software. All the displayed data are also closed.